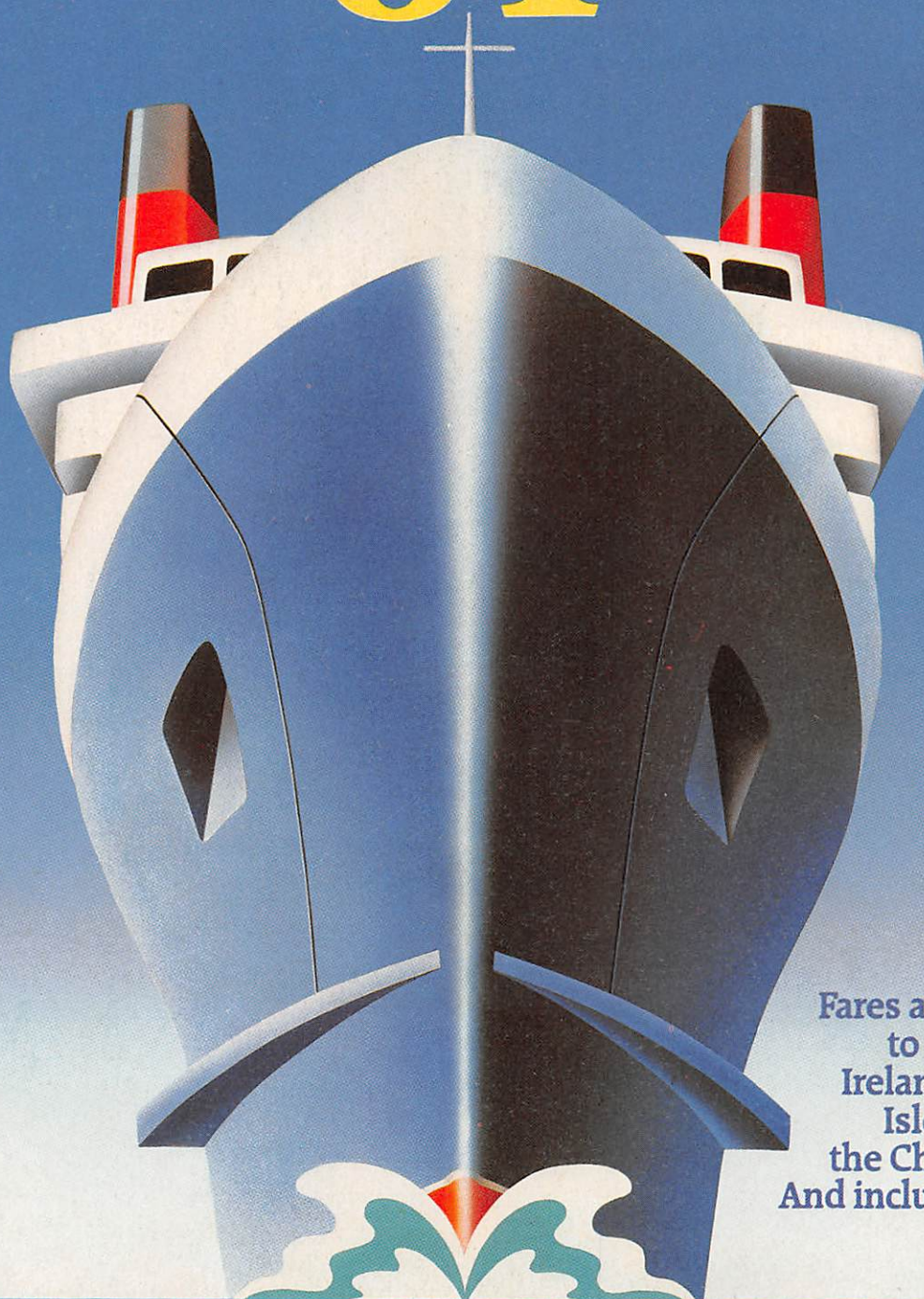


# Sealink **CAR FERRY GUIDE '84**



Fares and Timetables  
to the Continent,  
Ireland, Isle of Man,  
Isle of Wight and  
the Channel Islands.  
And inclusive motoring  
holiday ideas



# Sealink. The best start to motoring holiday

At Sealink we believe your holiday should start the minute you come aboard the ferry.

That's why we offer you more than any other ferry company.

More sailings to more destinations. And more on board facilities as well.

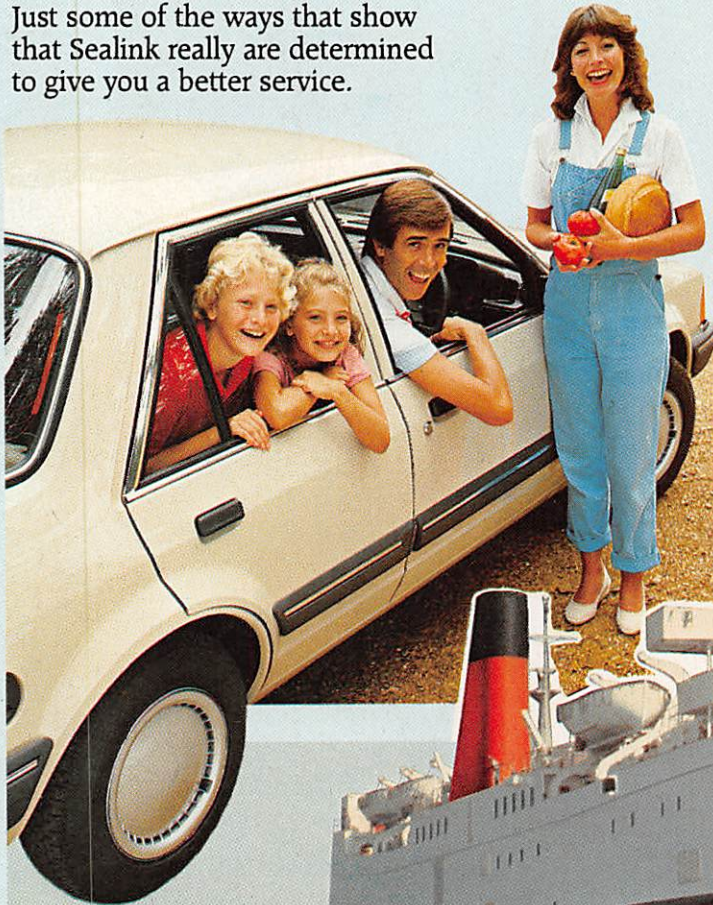
For example, on the Dover—Calais route we operate the newest fleet on the Channel, not to mention the best equipped.

You'll find special Mother and Baby Rooms, Video Areas, comfortable bars and good food at reasonable prices. And wherever you're sailing to, the Continent, Ireland, The Channel Islands, The Isle of Man or the Isle of Wight, you'll find the service is just the same—friendly and efficient.

But Sealink's service doesn't stop at getting you to your destination as comfortably and quickly as possible.

We can also arrange your whole motoring holiday for you. Get a copy of our inclusive holiday programme with details of Caravanning, Camping, Self-catering and hotel inclusive arrangements.

Just some of the ways that show that Sealink really are determined to give you a better service.





**A B C D E** Tariff—see page 19

## HARWICH → HOEK VAN HOLLAND

### 1 JANUARY to 15 APRIL

Time	Days of operation	Tariff
1115	Daily	<b>E</b>
2145	Daily	<b>D</b>

### 16 APRIL to 21 JUNE

Time	Days of operation	Tariff
1115	Daily	<b>E</b>
2145	Daily	<b>B</b>

### 22 JUNE to 16 SEPTEMBER

Time	Days of operation	Tariff
1115	Daily	<b>C</b>
2145	Daily	<b>A</b>


### 17 SEPTEMBER to 4 NOVEMBER

Time	Days of operation	Tariff
1115	Daily	<b>E</b>
2145	Daily	<b>B</b>

### 5 NOVEMBER to 31 DECEMBER

Time	Days of operation	Tariff
1115	Daily except 25, 26 December	<b>E</b>
2145	Daily except 25 December	<b>D</b>

 Crossing about 6hr 45 (day) 7hr 30 (night)

 Check-in 1hr

## HOEK VAN HOLLAND → HARWICH

### 1 JANUARY to 15 APRIL

Time	Days of operation	Tariff
1130	Daily	<b>E</b>
2300	Daily	<b>D</b>

### 16 APRIL to 21 JUNE

Time	Days of operation	Tariff
1130	Daily	<b>E</b>
2300	Daily	<b>B</b>

### 22 JUNE to 16 SEPTEMBER

Time	Days of operation	Tariff
1130	Daily	<b>C</b>
2300	Daily	<b>A</b>

### 17 SEPTEMBER to 4 NOVEMBER

Time	Days of operation	Tariff
1130	Daily	<b>E</b>
2300	Daily	<b>B</b>

### 5 NOVEMBER to 31 DECEMBER

Time	Days of operation	Tariff
1130	Daily except 25 December	<b>E</b>
2300	Daily except 25 December	<b>D</b>



Help yourself at the Smorgasbord



Relax in the Terraced Bar



2-Berth Cabin



# Car Ferry Tariffs

## Motorist Fares/Vehicle Rates for Single Journeys

	DOVER/FOLKESTONE - CALAIS DOVER - DUNKERQUE				FOLKESTONE - BOULOGNE					NEWHAVEN - DIEPPE					WEYMOUTH - CHERBOURG			
	Tariff	Tariff	Tariff	Tariff	Tariff	Tariff	Tariff	Tariff	Tariff	Tariff	Tariff	Tariff	Tariff	Tariff	Tariff	Tariff	Tariff	Tariff
<b>Motorist Fares</b> (driver and accompanying passengers)	E	D	C	B	E	D	C	B	A	E	D	C	B	A	D	C	B	A
Adult	£10.00	£10.00	£10.00	£10.00	£10.00	£10.00	£10.00	£10.00	£10.00	£15.00	£15.00	£15.00	£15.00	£15.00	£18.90	£18.90	£18.90	£18.90
Child (4 but under 14 years)	£5.00	£5.00	£5.00	£5.00	£5.00	£5.00	£5.00	£5.00	£5.00	£7.50	£7.50	£7.50	£7.50	£7.50	£9.50	£9.50	£9.50	£9.50
<b>Vehicle Rates</b> <b>Cars, Motorised Caravans, Minibuses and Three-wheeled Vehicles</b>																		
Up to 4.00m in length	16.00	24.00	33.00	43.00	16.00	21.00	33.00	43.00	50.00	19.00	27.00	37.00	47.00	54.00	24.50	36.00	42.50	49.50
Up to 4.50m in length	16.00	30.00	42.00	52.00	16.00	27.00	42.00	52.00	60.00	19.00	34.00	47.00	57.00	65.00	33.00	43.00	50.50	59.00
Up to 5.50m in length	16.00	34.00	50.00	60.00	16.00	31.00	50.00	60.00	70.00	19.00	39.00	56.00	66.00	75.00	33.00	43.00	50.50	59.00
Over 5.50m: each additional metre (or part thereof)	9.00	9.00	9.00 <sup>a</sup>	9.00	9.00	9.00	9.00	9.00	9.00	9.00	9.00	9.00	9.00	9.00	No additional charge			
<b>Caravans/Trailers</b> <b>To Calais, Boulogne, Dieppe</b> (not accepted on Dunkerque route)																		
Up to 3.00m in length	12.00	16.00	14.00	12.00	12.00	16.00	14.00	12.00	12.00	16.00	16.00	16.00	16.00	16.00	—	—	—	—
Up to 5.50m in length†	12.00	20.00	18.00	16.00	12.00	20.00	18.00	16.00	14.00	38.00	38.00	38.00	38.00	38.00	—	—	—	—
Over 5.50m: each additional metre (or part thereof)	9.00	9.00	9.00	9.00	9.00	9.00	9.00	9.00	9.00	9.00	9.00	9.00	9.00	9.00	—	—	—	—
†(50% reduction on selected Newhaven - Dieppe sailings - see note 3)																		
<b>To Cherbourg</b> Charge per 0.50m or part thereof	—	—	—	—	—	—	—	—	—	—	—	—	—	—	2.30	2.75	3.60	4.25
<b>Motorcycles/Scooters</b>	8.00	9.00	10.00	11.00	8.00	9.00	10.00	11.00	12.00	8.00	9.00	10.00	11.00	12.00	7.50	8.50	10.50	11.50
<b>Bicycles/Tandems</b> (Cyclists pay the normal foot passenger fare shown below)	FREE	FREE	FREE	FREE	FREE	FREE	FREE	FREE	FREE	FREE	FREE	FREE	FREE	FREE	3.00	3.00	3.00	3.00

## Motoring Money Savers – RETURN FARES (SEE NOTE 4)

<b>60 Hour Excursion</b>	The <b>single tariffs</b> shown above for motorists and the length of vehicle apply for the <b>return journey</b> . The date/time of <b>outward</b> travel determines the tariff applicable. <b>Caravans and trailers</b> – see note 5																	
<b>5 Day (120 Hours) Excursion</b>	Tariff	Tariff	Tariff	Tariff	Tariff	Tariff	Tariff	Tariff	Tariff	Tariff	Tariff	Tariff	Tariff	Tariff	Tariff	Tariff	Tariff	Tariff
	E	D	C	B	E	D	C	B	A	E	D	C	B	A	D	C	B	A
	£	£	£	£	£	£	£	£	£	£	£	£	£	£	£	£	£	£
(The date/time of <b>outward</b> travel determines the tariff applicable).																		
Adult	15.00	15.00	15.00	15.00	15.00	15.00	15.00	15.00	15.00	22.00	22.00	22.00	22.00	22.00	28.50	28.50	28.50	28.50
Child (4 but under 14 years)	7.50	7.50	7.50	7.50	7.50	7.50	7.50	7.50	7.50	11.00	11.00	11.00	11.00	11.00	14.25	14.25	14.25	14.25
<b>Vehicle</b> overall length not exceeding:																		
4.00m	24.00	36.00	49.00	64.00	24.00	31.00	49.00	64.00	75.00	28.00	40.00	55.00	70.00	81.00	37.00	54.00	64.00	74.50
4.50m	24.00	45.00	63.00	78.00	24.00	40.00	63.00	78.00	90.00	28.00	51.00	70.00	85.00	97.00	49.50	64.50	76.00	88.50
5.50m	24.00	51.00	75.00	90.00	24.00	46.00	75.00	90.00	105.00	28.00	58.00	84.00	99.00	112.00	49.50	64.50	76.00	88.50
<b>Motorcycles/Scooters</b>	12.00	13.50	15.00	16.50	12.00	13.50	15.00	16.50	18.00	12.00	13.50	15.00	16.50	18.00	11.50	13.00	16.00	17.50
<b>Caravans and trailers</b> – see note 5																		

## Foot Passenger Fares (Single journey – double for return)

<b>Adult</b>	13.20	13.20	13.20	13.20	13.20	13.20	13.20	13.20	13.20	17.50	17.50	17.50	17.50	17.50	18.90	18.90	18.90	18.90
<b>Child</b> (4 but under 14 years)	6.60	6.60	6.60	6.60	6.60	6.60	6.60	6.60	6.60	8.75	8.75	8.75	8.75	8.75	9.50	9.50	9.50	9.50

**NOTES:** (see also How to plan your crossing on page 6 and conditions on page 44).

**1. The tariff** applicable is determined by the date/time of sailing used. Consult the timetables for the sailing(s) required, which are letter coded, then read off the fares from the appropriate tariff (A, B, C, D, E).

Return fares are the summation of the appropriate single fares, (except in the case of 'Motoring Money-Savers' – see note 4).

**2. Children under 4 years old travel free.**

**3. Reduced rates for caravans/trailers over 3 metres and up to 5.50m in length**

50% reduction off the normal rate applies on the following sailings:  
(see timetables for dates of operation).

Newhaven → Dieppe 01.00, 07.00/08.00, 13.00, 22.45/23.45

Dieppe → Newhaven 02.00, 05.30, 09.00 (except Sats/Suns), 20.30

**4. Motoring Money-Savers** These motoring money-saver offers are available for all motorised vehicles not exceeding 5.50m in length (including those towing caravans/trailers). The 60 Hours and 5 Day (120 Hours) validities are calculated from the time of arrival at the Continental port. The return journey must be made not later than the sailing immediately following the completion of the respective validity, otherwise additional charges become payable.

The date/time of **outward** travel determines the tariff applicable.

If travel is **outward and return** by different routes the appropriate charge is calculated by adding together half of the respective fares for each of the two routes, based on the **outward** sailing tariff code.

**5. Caravans and trailers – Motoring Money Savers.**

Caravans and trailers via Calais, Boulogne or Dieppe are charged the appropriate single tariff shown above in each direction, based on the **outward** sailing tariff code.

For rates via Weymouth/Cherbourg please enquire at your nearest Sealink office, principal B.R. station/travel centre, or Sealink appointed travel agent.

**6. Vehicles intended for sale or carrying goods subject to customs documentation (e.g. T forms, etc) are excluded from all the above tariffs.**

**Cabins and Berths** Cabins and berths are available on most Sealink ships between Britain and France but accommodation is limited and advance reservation is not possible on services from Dover, Folkestone, or Newhaven.

Cabins and berths on these services may only be reserved by application to the ship's purser at the time of embarkation, subject to availability. The type of cabin/berth provided varies on different ships. For full details of charges, please enquire when making your booking or ask the ship's purser.

On the Weymouth – Cherbourg route berths are reservable in advance (on or embarkation, subject to availability) at £4 per berth on day sailings, or £7.50 per berth on night sailings.