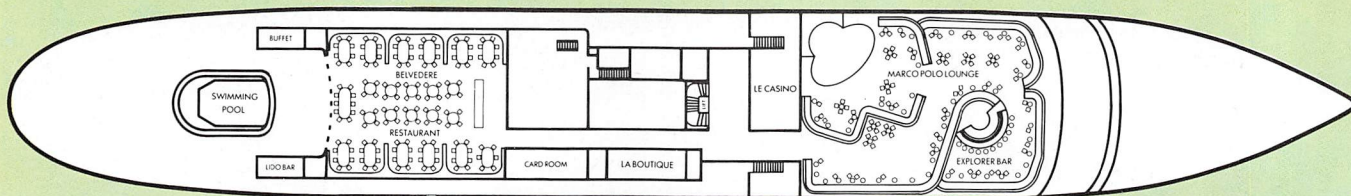


Ocean Islander

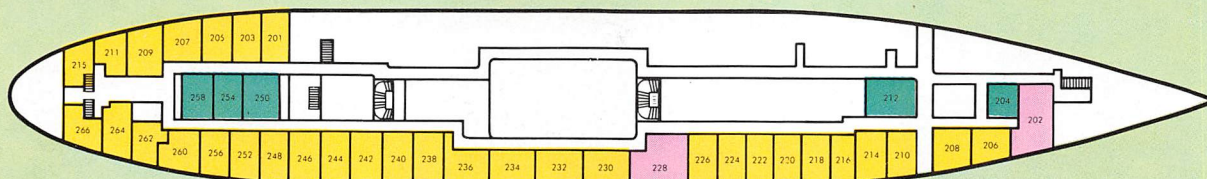
DECK PLANS AND CRUISE TARIFF



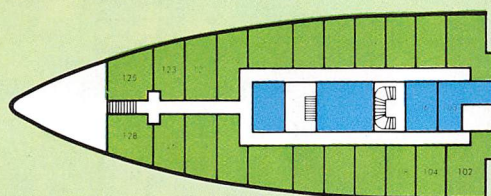
PROMENADE DECK



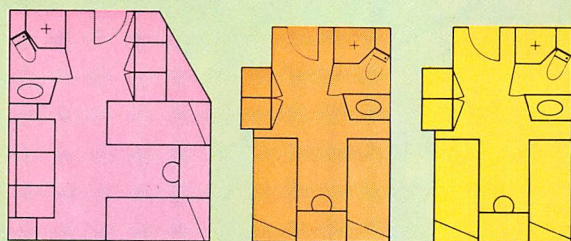
RIVIERA DECK



PACIFIC DECK



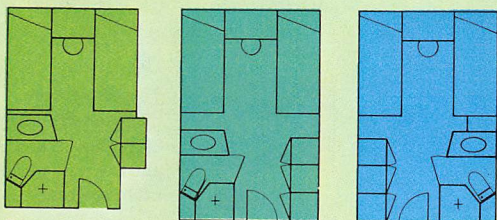
CARIBBEAN DECK



A

B

C



D

E

F

These stateroom diagrams are examples of the layouts available and may vary within each category.

FREE FLIGHTS!

Prices include free air fare from Miami, Tampa and Orlando. Low air fare add-ons from 73 other US cities are on page 21.



— SUN DECK
— PROMENADE DECK
— RIVIERA DECK
— PACIFIC DECK
— CARIBBEAN DECK

Tariff

Cabin Category & Description	Per Person Rates	
	Regular Season	High Season
A Deluxe two-bed outside staterooms with sofa and shower.	\$1595	\$1750
B Superior two-bed outside staterooms with shower. Riviera Deck.	1345	1495
C Superior two-bed outside staterooms with shower. Pacific Deck.	1260	1390
D Two-bed outside staterooms with shower. Caribbean Deck.	1195	1295
E Two-bed inside staterooms with shower. Pacific or Riviera Deck.	1095	1195
F Two-bed inside staterooms with shower. Caribbean Deck.	995	1095

Rates are based on double occupancy. Single occupancy, 50% supplement on above rates. Third person in cabin, 50% reduction on above rates.

In deluxe category A, a third person will be accommodated on a comfortable sofa-bed. In categories B through F third persons are accommodated in upper fold-away berths. A limited number of staterooms with double beds are available in most categories. All rates are per person in US dollars, and are subject to change. Port charges \$35.

Regular Season: November 11, 25; December 2, 9, 16; January 6, 13, 20.
High Season: November 18; December 23, 30; January 27; February 3, 10, 17, 24; March 3, 10, 17, 24, 31.