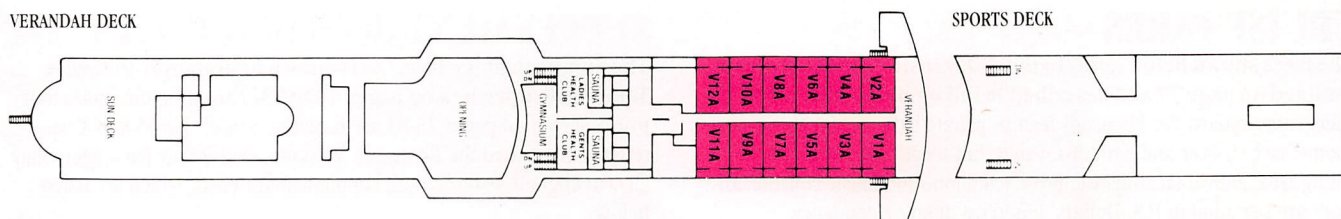
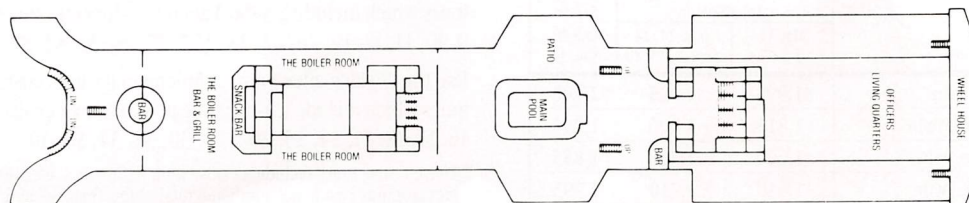


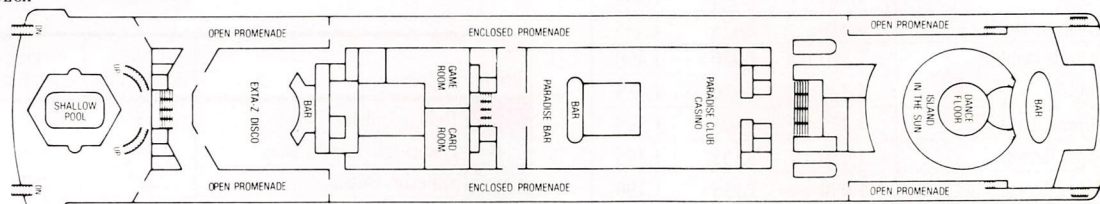
VERANDAH DECK



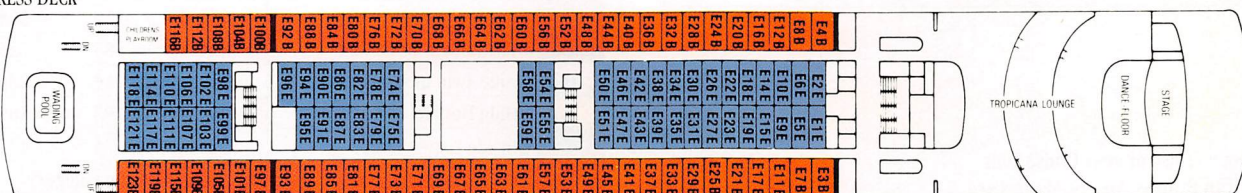
LIDO DECK



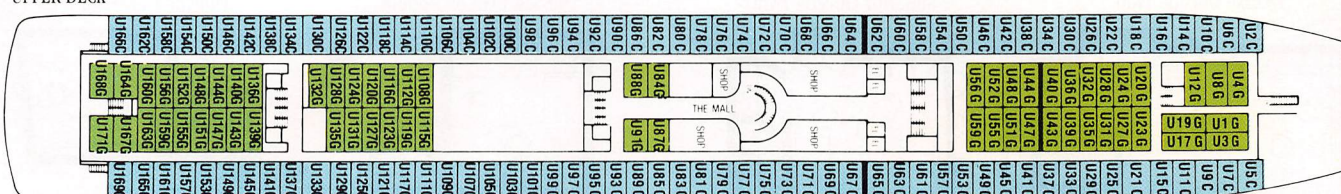
PROMENADE DECK



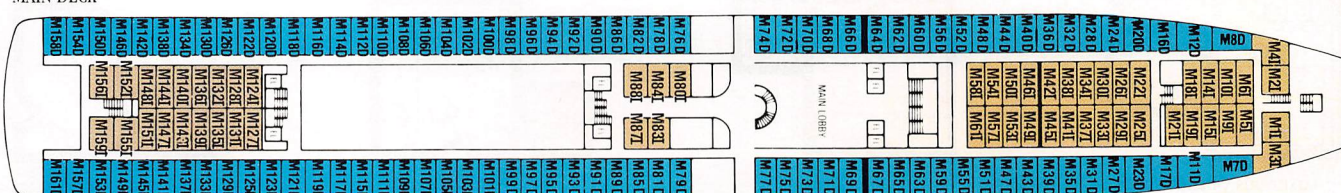
EMPEROR DECK



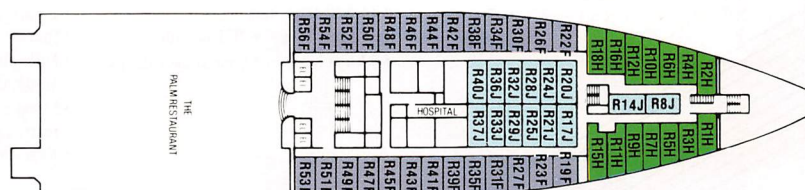
UPPER DECK



MAIN DECK



RIVIERA DECK



Note: Staterooms are identified with numbers and letters. The letter preceding each stateroom number designates the deck. The letter following each stateroom number designates the cruise fare category and room type.



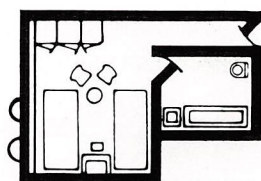
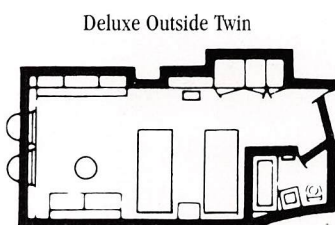
# RHAPSODY

## CRUISE FARES

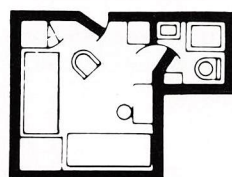
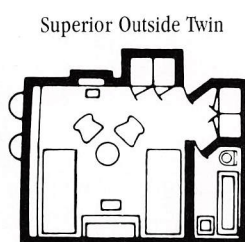
The fares shown below apply to the 7-day Inside Passage Cruises outlined on page 77 and described in full on pages 38 and 39. All staterooms aboard the Rhapsody feature private bathroom with shower (some have shower and bathtub), vanity, full-length enclosed closets, sitting area, individual climate control, telephone and music console. All rates are per adult in U.S. Dollars, based on double occupancy.

Room Category	Value Season		Peak Season
	May 31-June 7	June 14, 21-Sept. 6, 13, 20	June 28-Aug. 30
<b>A</b> Deluxe Outside Twin	\$1,995	\$2,085	\$2,190
<b>B</b> Luxurious Outside Twin	1,815	1,900	1,995
<b>C</b> Superior Outside Twin	1,690	1,760	1,855
<b>D</b> Superior Outside Twin	1,640	1,710	1,795
<b>E</b> Outside Twin	1,570	1,635	1,720
<b>F</b> Outside Twin	1,500	1,565	1,640
<b>G</b> Outside Twin or Double	1,410	1,475	1,545
<b>H</b> Inside Twin or Double	1,360	1,420	1,490
<b>I</b> Inside Double	1,320	1,370	1,435
<b>J</b> Outside Upper/Lower	1,255	1,305	1,365
<b>K</b> Inside Upper/Lower	1,150	1,195	1,255
<b>L</b> Inside Upper/Lower	1,090	1,135	1,190
Rate for 3rd and 4th person	750	785	825
Port charges and embarkation fee	23	23	23

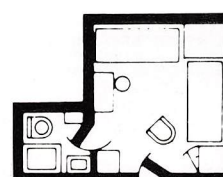
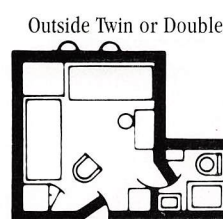
Charge your Cruise or your Cruise Tour on American Express, Visa or MasterCard.



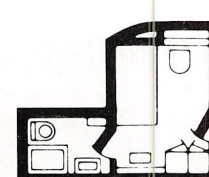
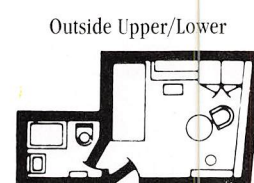
Luxurious Outside Twin



Outside Twin

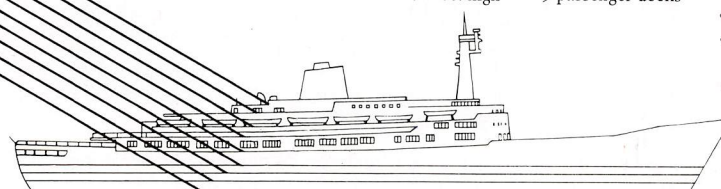


Inside Twin or Double



Inside Upper/Lower

SUN DECK  
BRIDGE DECK  
UPPER PROMENADE DECK  
PROMENADE DECK  
MAIN DECK  
ALLEGRO DECK  
BOLERO DECK  
CONCERTO DECK  
DOMINO DECK



- 24,500 gross tons
- 642 feet long • 79 feet wide
- 72 feet high • 9 passenger decks

- 2 passenger elevators
- Indoor and outdoor swimming pools
- Fully air conditioned
- Automatic stabilizers
- Latest navigational and operational instruments
- Registered in the Bahamas

## SUPPLEMENTARY TOUR COSTS

The Supplementary Tour Costs shown below apply to Cruise Tours 1-40 described on pages 40 to 73. The minimum cruise tour prices shown on pages 78-83 are based on use of shared K or L type staterooms aboard the Rhapsody. Westours cruise tour passengers may elect to upgrade staterooms at supplementary costs, which are listed below.

Use the "cruise before tour" supplementary tour costs for these cruise tours which include a 3-day Vancouver-Juneau cruise: 3,\* 4,\* 5, 6, 7, 8, 9, 10, 11, 12, 19, 20, 22, 23, 26,\* 27, 28, 31, 32, 37, 39.

Use the "Cruise after tour" supplementary tour costs for these cruise tours which include a 4-day Juneau-Vancouver cruise: 3,\* 4,\* 13, 14, 15, 16, 17, 18, 21, 24, 25, 26,\* 29, 30, 33, 34, 38, 40

\* These cruise tours include a cruise both before and after the tour; the supplementary tour cost is the combined total of the "before" and "after" costs.

Room Category		Cruise Before Tour	Cruise After Tour	Tours 1, 2, 35, 36
<b>A</b>	Deluxe Outside Twin	\$255	\$340	\$595
<b>B</b>	Luxurious Outside Twin	240	315	555
<b>C</b>	Superior Outside Twin	215	280	495
<b>D</b>	Superior Outside Twin	195	260	455
<b>E</b>	Outside Twin	170	225	395
<b>F</b>	Outside Twin	155	210	365
<b>G</b>	Outside Twin or Double	140	185	325
<b>H</b>	Inside Twin or Double	110	145	255
<b>I</b>	Inside Double	80	105	185
<b>J</b>	Outside Upper/Lower	60	75	135
<b>K</b>	Inside Upper/Lower	Tour Basing Category		
<b>L</b>	Inside Upper/Lower	Tour Basing Category		